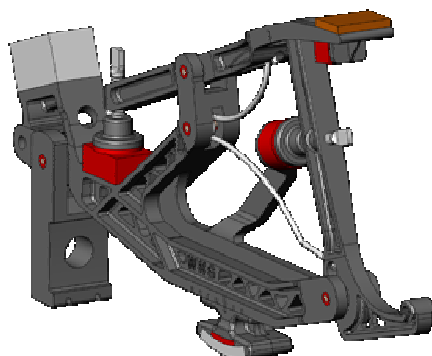


# *Wessell, Nickel & Gross*

## COMPONENTS CATALOGUE



Order at:

[www.wesselnickelgross.com](http://www.wesselnickelgross.com)

Delivery ex works USA. All orders subject to approval.

Copyright 2008 Wessell, Nickel, & Gross Inc.

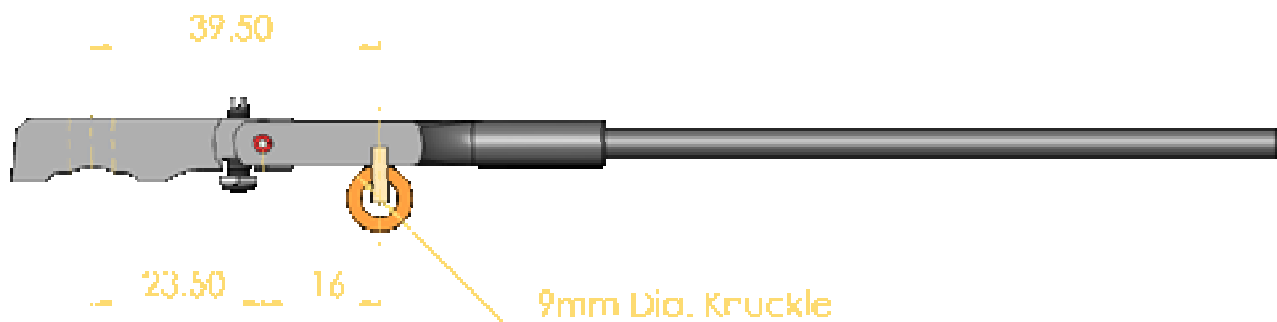
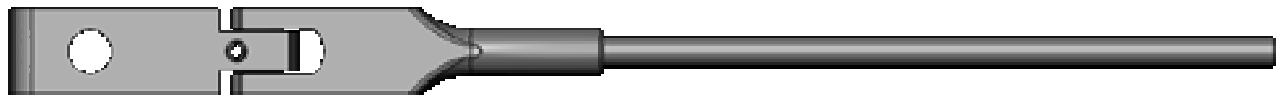
### **Recommended by:**

PianoDisc Europe, Schoenweißstr. 16, 90461 Nuremberg, Germany

Tel. +49-911-443035, Fax +49-911-443028, E-Mail: [info@pianodisc.de](mailto:info@pianodisc.de), Web: [www.pianodisc.de](http://www.pianodisc.de)

# *Wessell, Nickel & Gross*

## Shanks / flanges



## Grand leg plates

No Information / Picture available

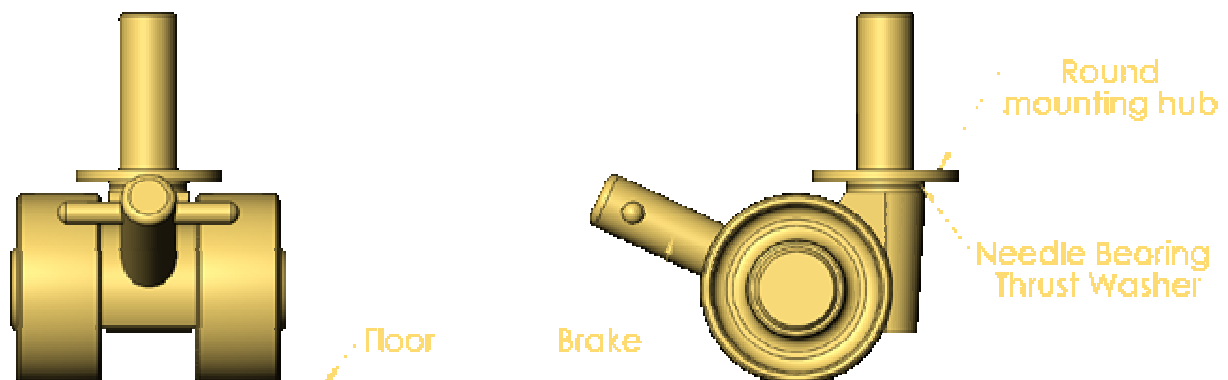
## Standard caster (grand)

No Information / Picture available

## Large (concert) caster

No Information / Picture available

## Medium (dual wheel) caster



# *Wessell, Nickel & Gross*

## WNG Action Glue

No Information / Picture available

## Drill bit, for small tubes / Drill bit, for large tubes



[.1575]  
4.0  
for small tubes

Part No. 06-5613



[.1850]  
4.7  
for large tubes

Part No. 06-5614

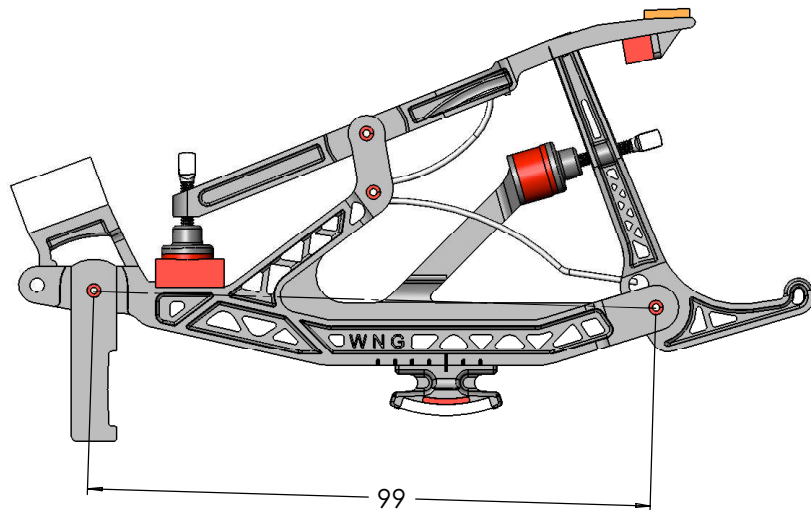
## Sample Kit



## The 99mm Standard

Wessell, Nickel & Gross repetitions can replace any repetition that conforms to the 99mm standard.

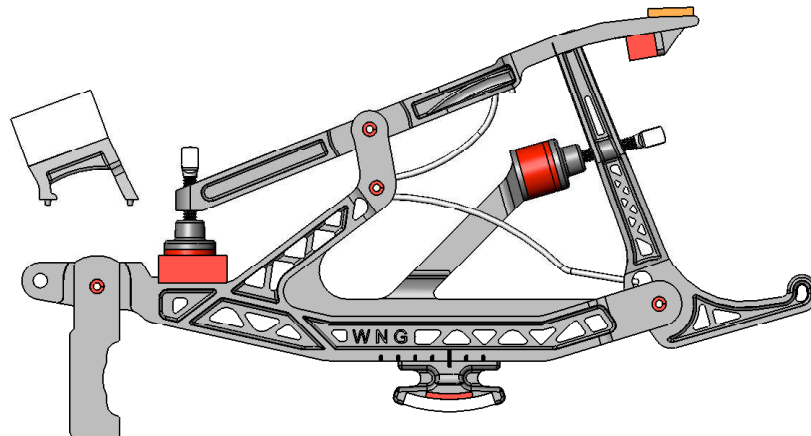
This means that the distance from the repetition flange center to the jack center is 99mm +/- 1mm.



## Optional Rest Cushion

On most repetition systems the rest cushion is either on or off depending on the design of the molding upon which the repetition is based.

WNG has designed an easy choice into the system. You decide if the The rest cushion is included or not. Its your choice.

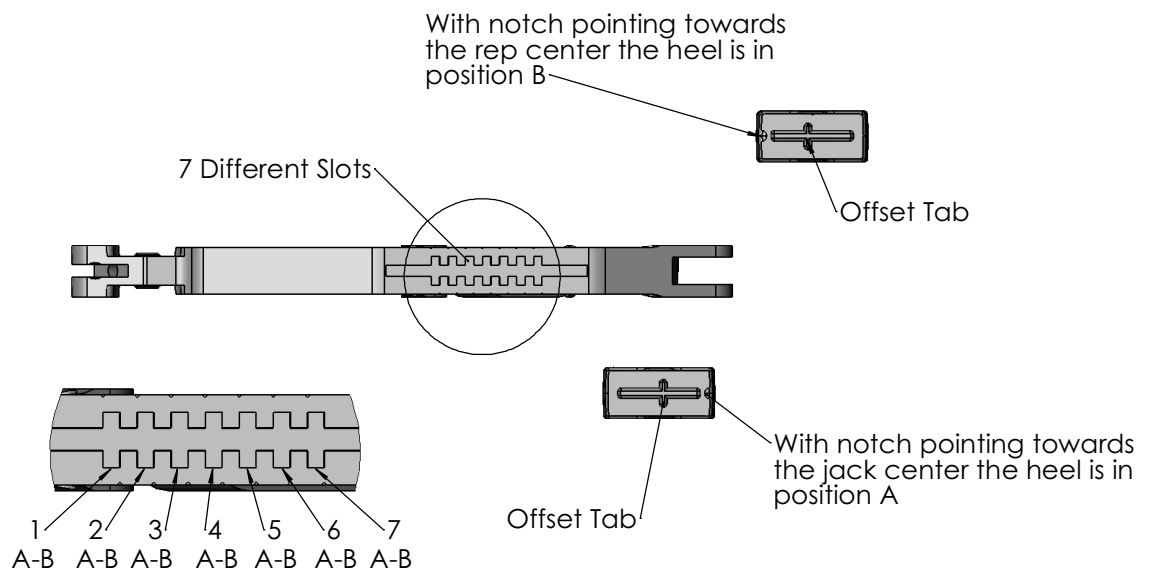


## Precision Heel Locating System

On the WNG repetition, there are 7 slots in the bottom of the repetition base.

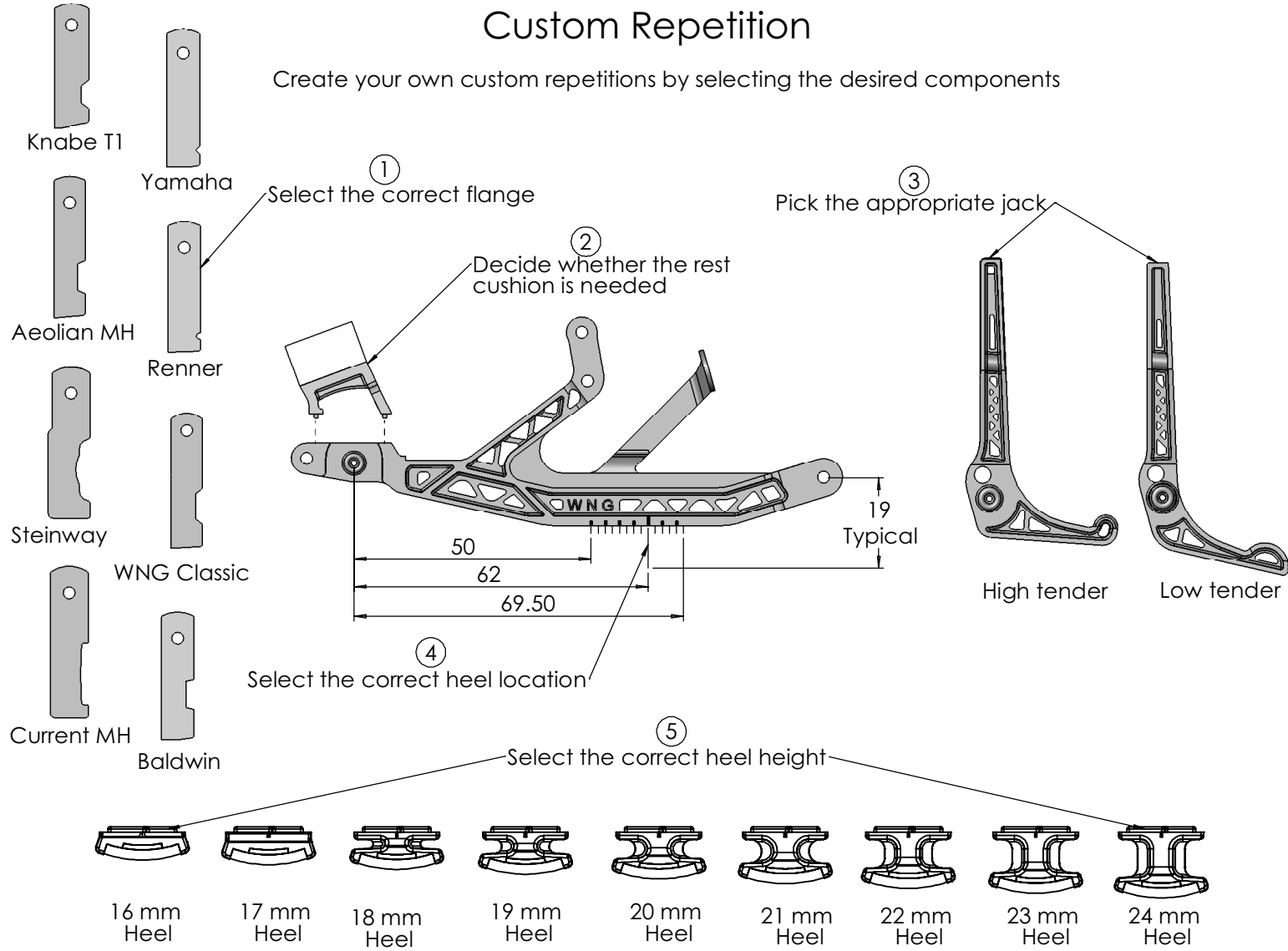
On the heel, there is a corresponding tab that is offset thus allowing two different heel locations for each slot. These locations are referred to as A and B.

Therefore, there are 14 different heel locations available to the sophisticated rebuilder. These are referred to as positions 1A through 7B.



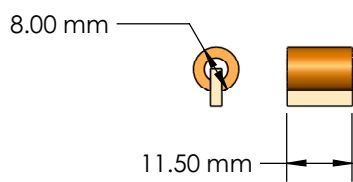
# Custom Repetition

Create your own custom repetitions by selecting the desired components

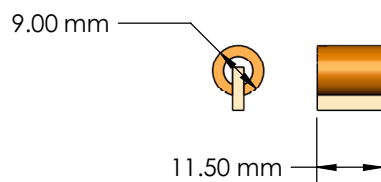


## WNG Knuckles

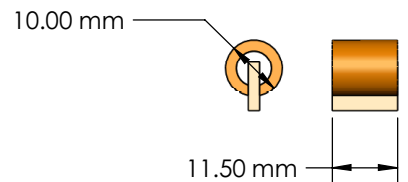
All knuckles use synthetic buckskin.



8mm x 11.5mm Knuckle  
Set of 90  
Part No. 06-5273



9mm x 11.5mm Knuckle  
Set of 90  
Part No. 06-5274



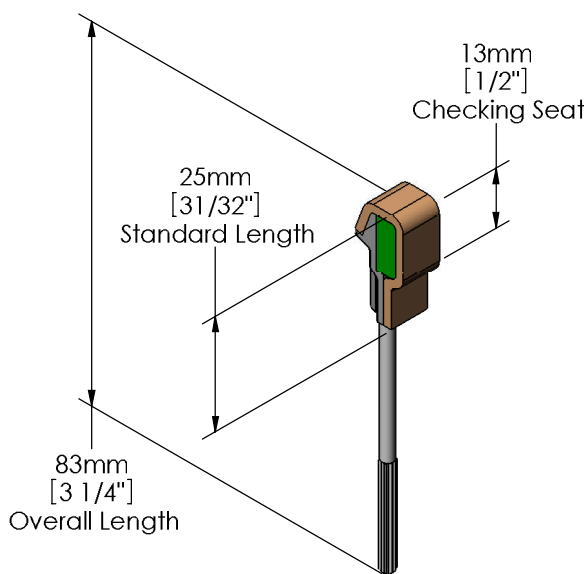
10mm x 11.5mm Knuckle  
Set of 90  
Part No. 06-5275



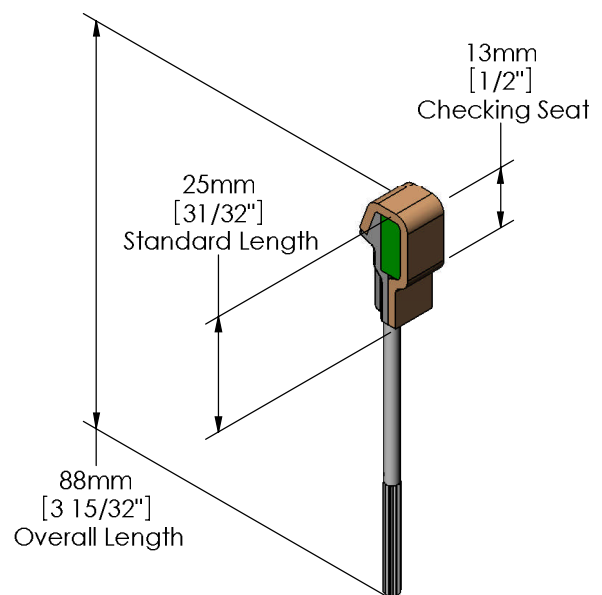
## Standard Back Checks

Modern design composite back check appropriate for a wide variety of pianos including old Steinways. Features superior checking and clearance.

Use 83mm back check for installation into vertical holes.  
Use 88mm back check for installation into angled holes.

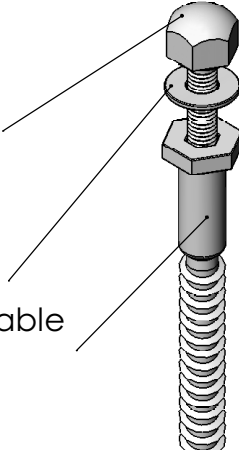
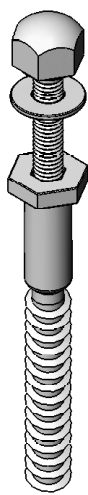
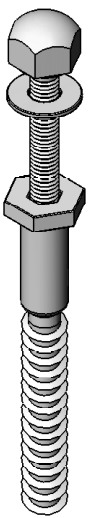


Standard 83mm Back Check  
Set of 90  
Part No. 06-5200

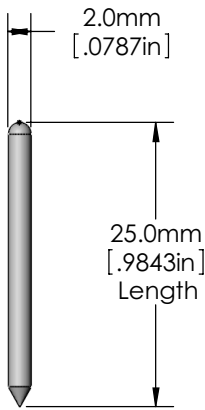


Standard 88mm Back Check  
Set of 90  
Part No. 06-5201

# Adjustable Perimeter Bolt With Domed Nut and Washer

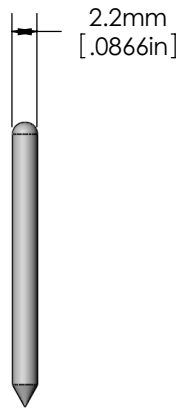
<p>Bolt Code A</p> <p>Use where plate thickness is between</p> <p>9mm and 30mm or 5/16" and 1-1/8"</p> <div><p>Domed Bolt Polished Chrome</p><p>Washer Polished Chrome</p><p>Nickel Plated Adjustable Perimeter bolt</p><p>Perimeter Bolt W 38mm Domed Bolt</p><p>Part No. 06-5300</p></div>	<p>Bolt Code B</p> <p>Use where plate thickness is between</p> <p>17mm and 38mm or 5/8" and 1-7/16"</p>  <p>Perimeter Bolt W 46mm Domed Bolt</p> <p>Part No. 06-5301</p>	<p>Bolt Code C</p> <p>Use where plate thickness is between</p> <p>25mm and 46mm or 1" and 1-3/4"</p>  <p>Perimeter Bolt W 54mm Domed Bolt</p> <p>Part No. 06-5302</p>
--	--	---

## Stainless Steel Bridge Pins



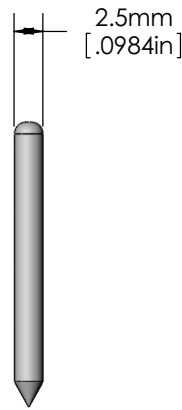
#6 Bridge Pin  
Qty 100  
Part No. 06-0233

#6 Bridge Pin Drill  
(#48, 1.93mm)  
Part No. 06-5600



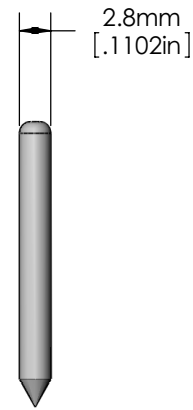
#7 Bridge Pin  
Qty 100  
Part No. 06-0234

#7 Bridge Pin Drill  
(#45, 2.10mm)  
Part No. 06-5601



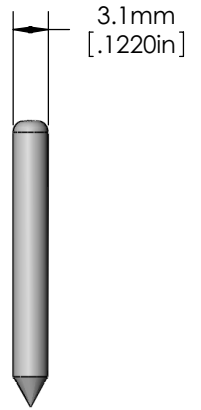
#8 Bridge Pin  
Qty 100  
Part No. 06-0235

#8 Bridge Pin Drill  
(#42, 2.37mm)  
Part No. 06-5602



#9 Bridge Pin  
Qty 100  
Part No. 06-0236

#9 Bridge Pin Drill  
(#36, 2.71mm)  
Part No. 06-5603



#10 Bridge Pin  
Qty 100  
Part No. 06-0237

#10 Bridge Pin Drill  
(#32, 2.95mm)  
Part No. 06-5604

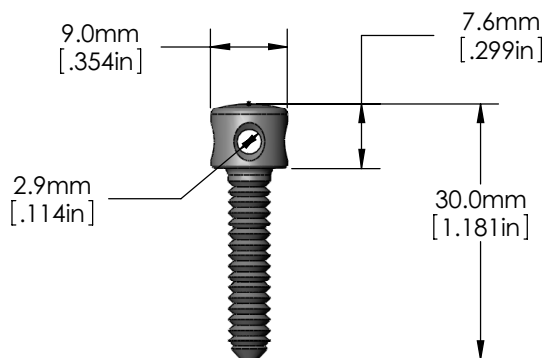
## Lightweight Capstan

Two things matter in a capstan, mass and a low coefficient of friction on its contact surface.

Most capstans are fashioned from brass. Unfortunately, brass is heavy and prone to tarnish. To combat this, the contacting surface is usually polished to reduce friction. This expedient is temporary as tarnish will degrade the contacting surface making it somewhat sticky.

WNG's capstan is made from aluminum. Aluminum is light, about 1/3 the mass of brass.

After machining, we hard anodize the capstan. This coats the capstan with Aluminum Oxide, one of the hardest substances on earth. The hardness is as much as Rockwell C65 or about as hard as a planer knife. When polished, the capstan becomes very slick and durable.



Set of 90  
Part No. 06-5303



Capstan Drill Bit  
4.0mm, [.1575"]

Part No. 06-5607

## Glide Bolt

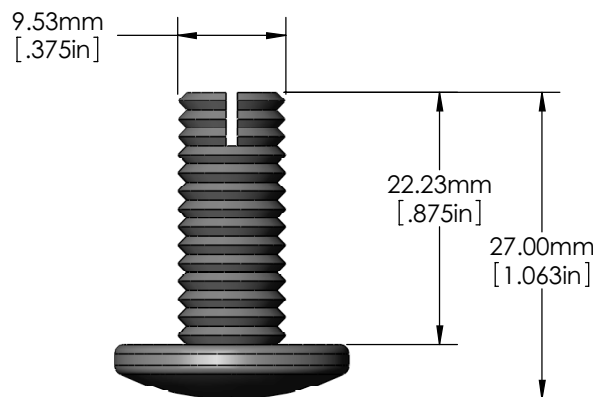
A glide bolt needs to slide smoothly on the keybed as it supports the weight of the action.

The traditional glide bolt is made from brass. The surface that rides on the keybed is polished to reduce friction. This, however, is a temporary expedient at best. Eventually tarnish and corrosion attack the brass causing increased friction between the keybed and the glide. Consequently, the keyframe no longer slides smoothly when the una corda pedal is played.

The WNG glide bolt is made from Aluminum, Hard Anodized and Polished for a permanent, super slick finish.

By hard anodizing and polishing the capstan we achieve a durable and permanently slick surface that, in normal use, will never degrade.

The hardness of this surface can be as much as Rockwell C65 (about as hard as a planer blade).



Part No. 06-0144

# Center Pins

Made from the highest quality German Silver wire.

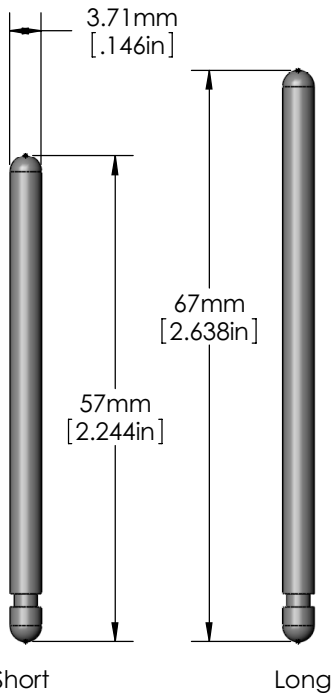


For all pins the quantity equals 100

Part Name	Diameter	Part No.
#18 Center Pin	.046 , 1.17mm	06-0240
#18-1/2 Center Pin	.047 , 1.19mm	06-0241
#19 Center Pin	.048 , 1.22mm	06-0242
#19-1/2 Center Pin	.049 , 1.24mm	06-0243
#20 Center Pin	.050 , 1.27mm	06-0244
#20-1/2 Center Pin	.051 , 1.30mm	06-0245
#21 Center Pin	.052 , 1.32mm	06-0246
#21-1/2 Center Pin	.053 , 1.35mm	06-0247
#22 Center Pin	.054 , 1.37mm	06-0248
#22-1/2 Center Pin	.055 , 1.40mm	06-0249
#23 Center Pin	.056 , 1.42mm	06-0250
#23-1/2 Center Pin	.057 , 1.45mm	06-0251
#24 Center Pin	.058 , 1.47mm	06-0252
#24-1/2 Center Pin	.059 , 1.50mm	06-0253
#25 Center Pin	.060 , 1.52mm	06-0254

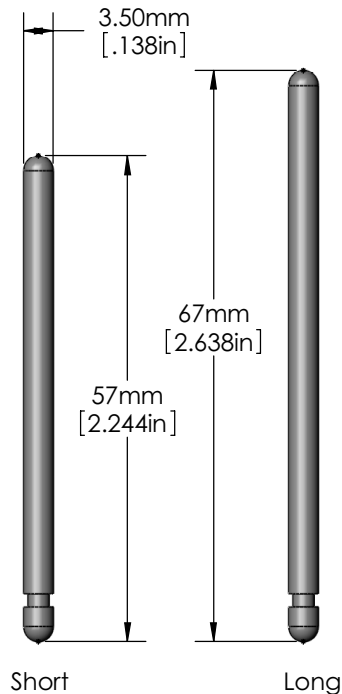
## Balance Rail Pins

Made from Aluminum, Hard Anodized and Polished  
for a permanent, super slick finish.



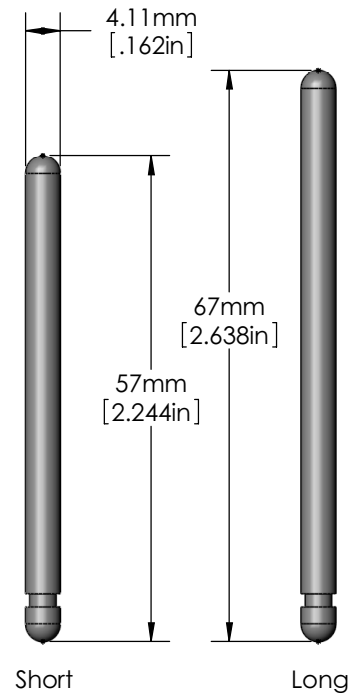
American Standard  
Balance Rail Pins

Part No.  
Short - Set of 90 - 06-0004  
Long - Set of 90 - 06-0005



European Standard  
Balance Rail Pins

Part No.  
Short - Set of 90 - 06-0006  
Long - Set of 90 - 06-0007

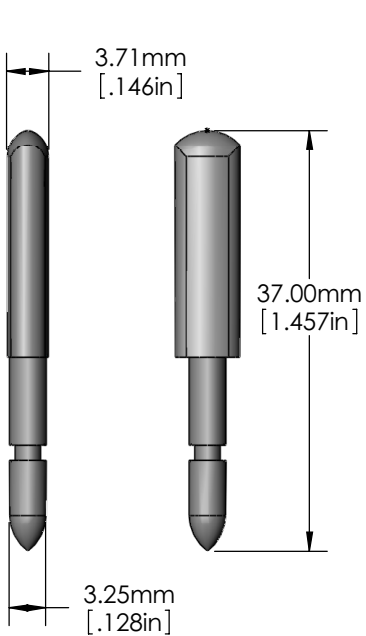


Old Steinway  
Balance Rail Pins

Part No.  
Short - Set of 90 - 06-0008  
Long - Set of 90 - 06-0009

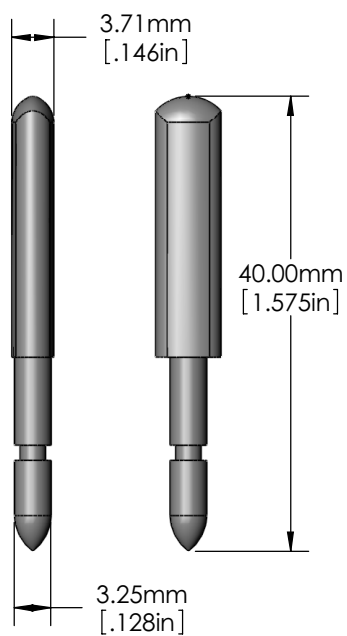
## Front Rail Pins

Made from Aluminum, Hard Anodized and Polished  
for a permanent, super slick finish.



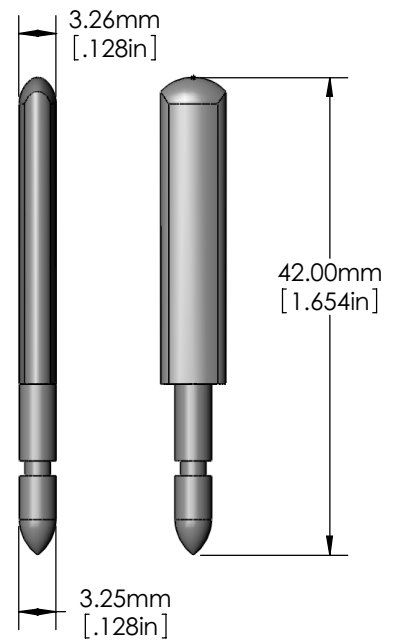
American Standard Short  
Front Rail Pins

Part No.  
Set of 90 - 06-0010



American Standard Long  
Front Rail Pins

Part No.  
Set of 90 - 06-0011



European Standard  
Front Rail Pins

Part No.  
Set of 90 - 06-0239

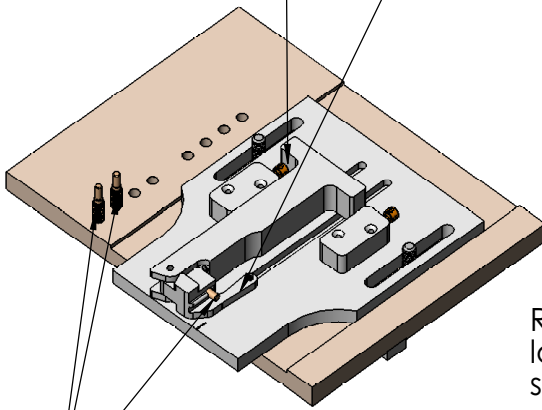


## Hammer Tail Squaring Jig

Cuts the ideal arc, angle and length on the hammer tail for optimum checking.

### Hammer Tail Length Setup

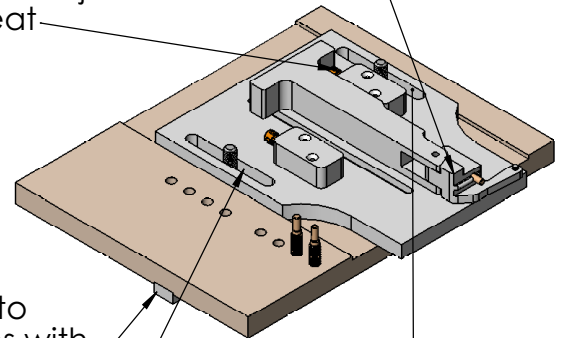
Capstan for fine adjustment of tail length.



Three pin sizes to match WNG Composite Bass and Treble shanks as well as a standard size for wooden shanks.

### Squaring Arc Setup

Capstan for fine adjustment of checking seat.



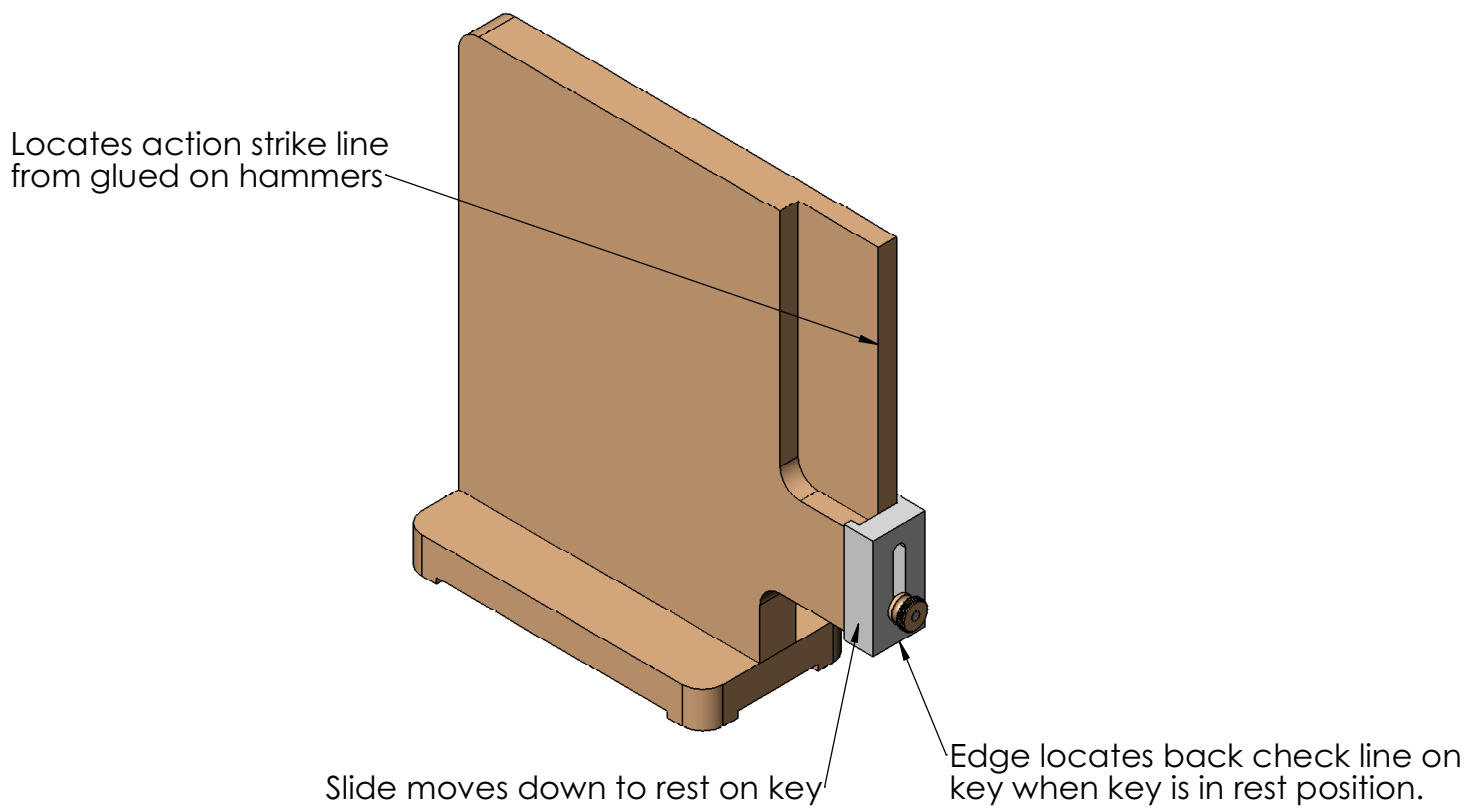
Removable insert to locate jig on tables with standard size miter slot.

Slide adjustment for easy setup on sander.

Hammer Tail Squaring Jig  
Part No. 06-5612

## Back Check Line Marking Pattern

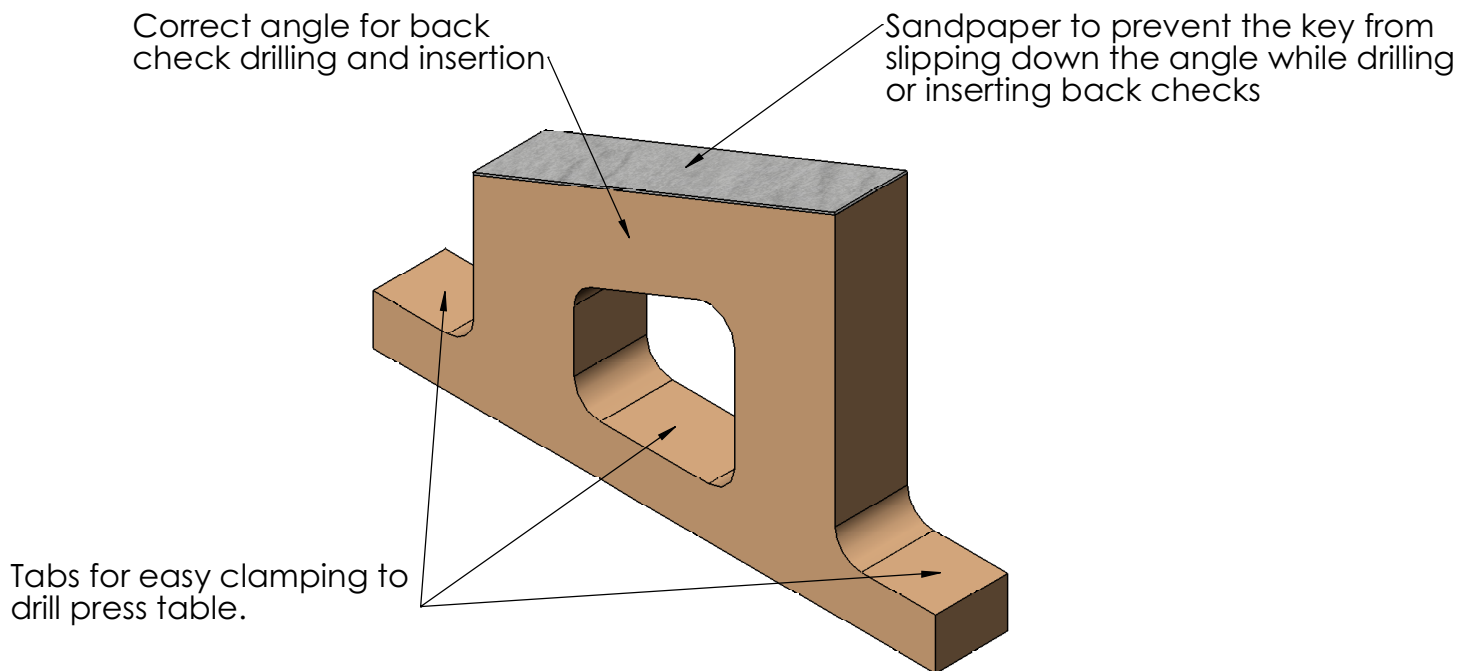
Locates the back check line on the key.



Back Check Line Marking Pattern  
Part No. 06-5609

## Angled Drilling and Insertion Block

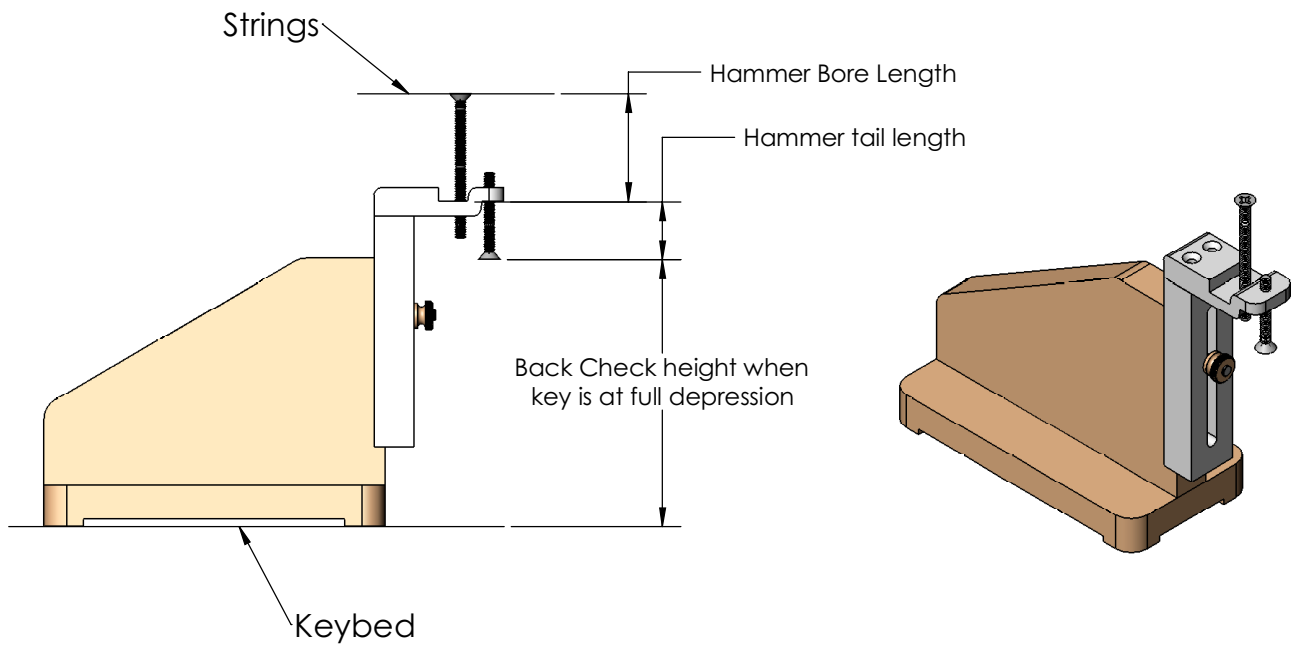
Positions the key at the correct angle for drilling and insertion.



Angled Drilling and Insertion Block  
Part No. 06-5615

## Back Check Height Gauge

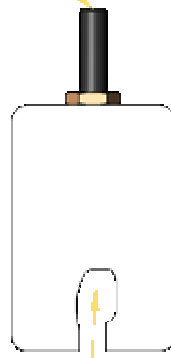
Provides a means to arrive at the correct back check height.



Back Check Height Gauge  
Part No. 06-5616

**Backcheck tool 04**  
**Back Check Inserter**

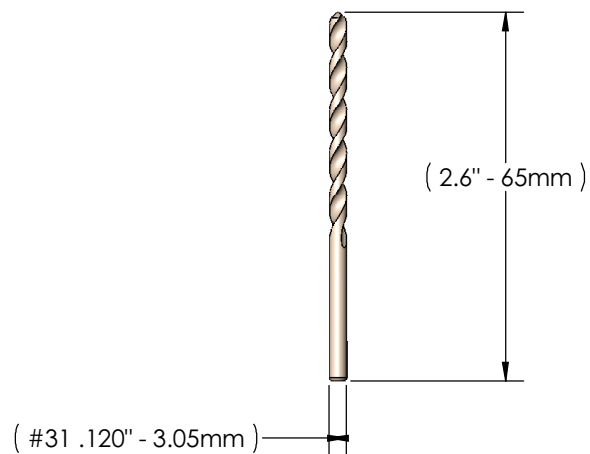
Shaft for drill press  
chuck to hold



Shaped to fit WNG  
Composite Back Check

## Back Check Drill Bit

WNG provides a parabolic flute drill bit of the correct diameter. A bit of this design will clear the material from a deep back check hole when the drill press is turning above 3000 rpm



Back Check Drill Bit  
Part No. 06-5606

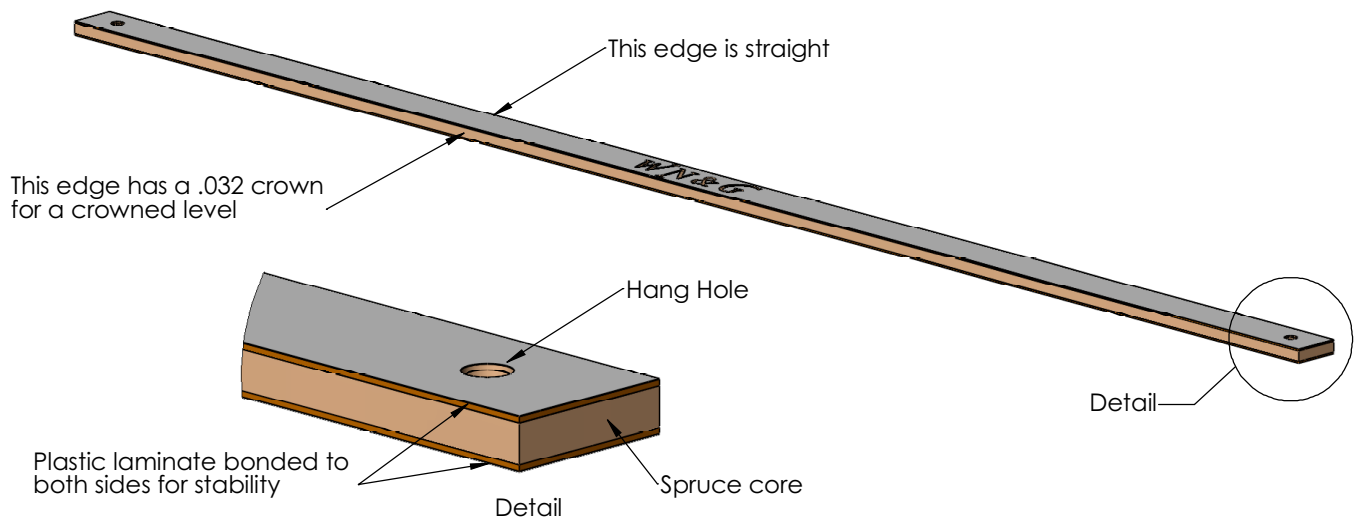
# Key Level Stick

## Now, a high quality Key Level Stick from Wessell, Nickel & Gross

For some years now it has been difficult to purchase a quality key leveling stick. The company that manufactured this tool went out of business some time ago.

Made from lightweight spruce and faced, front and back, with plastic laminate, this tool will last. Machined on our CNC router for accuracy, we can guarantee the accuracy of this too. This is a level stick befitting the WNG name.

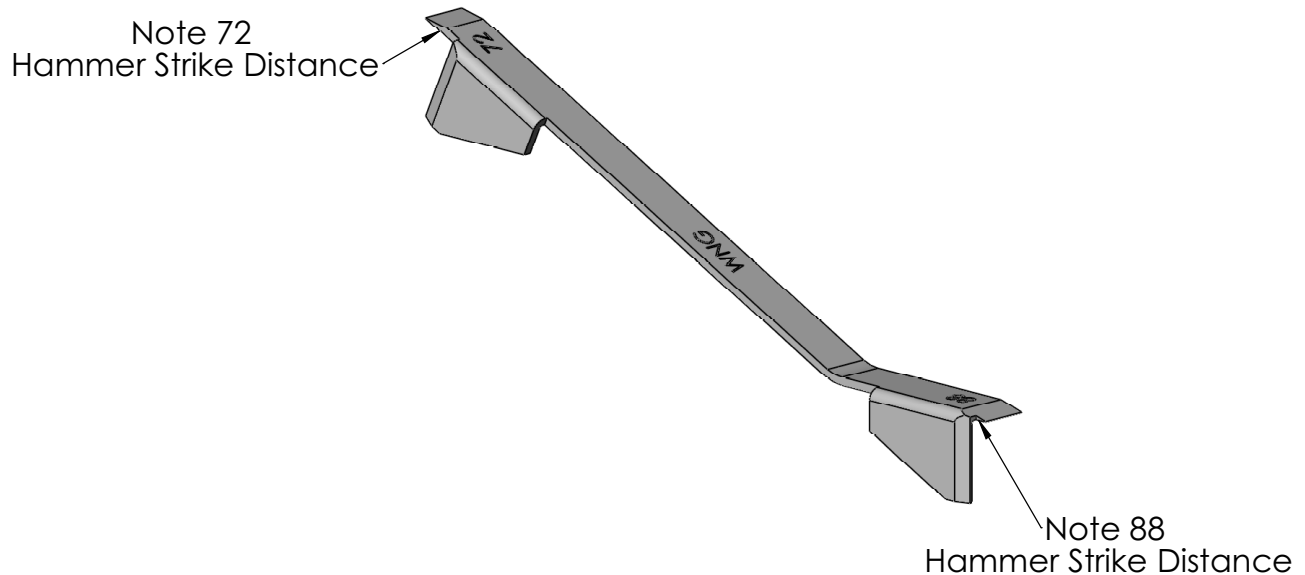
One side is straight and the other edge has a .8mm (.032) crown for those who prefer a crowned level. On each end is a hole from which to hang the tool.



Part No. 06-5608

## Treble Strike Gauge

When replacing hammers, it is very important that the hammer strikes the string in the proper place. This tool gives the technician an easy way to ensure that the hammer strike location is correct for notes 72 and 88



Treble Strike Gauge  
Part No. 06-0264